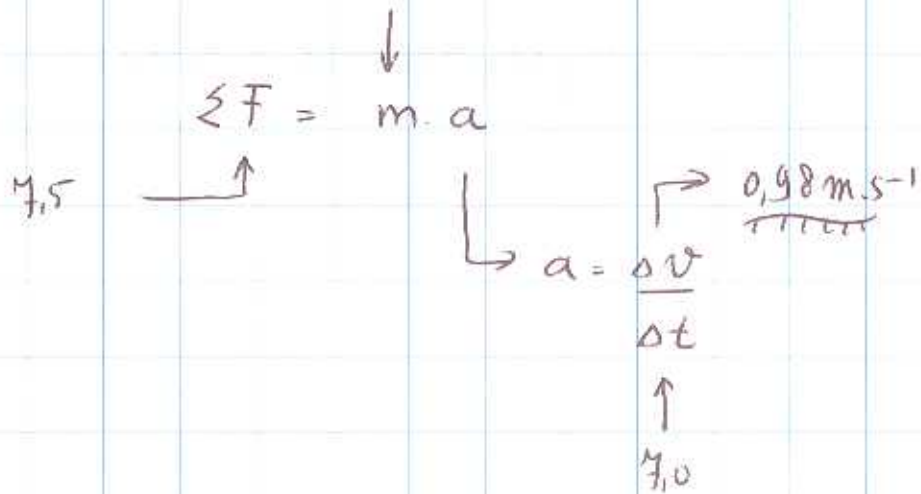


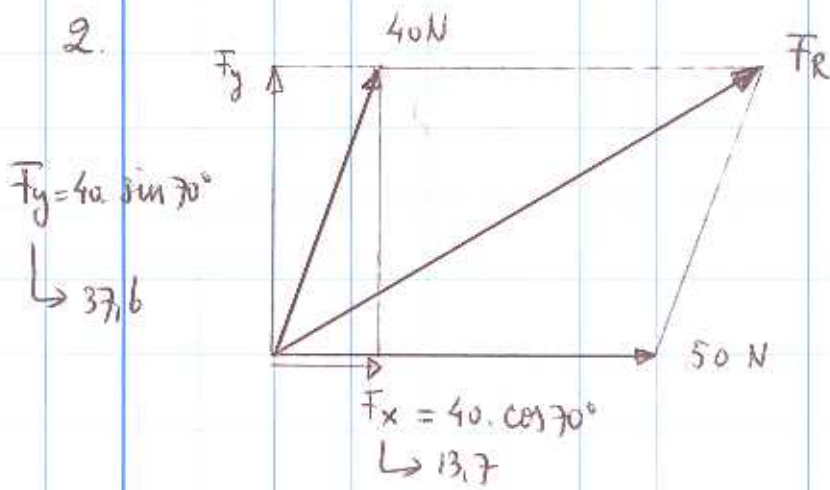
# Groeps opdracht H3.

32

1.



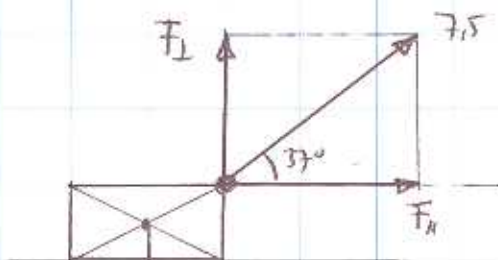
2.



$$F_R = \sqrt{(50 + 13,7)^2 + 37,6^2}$$

$$\rightarrow 74 \text{ N}$$

3.



$$F_L = F \cdot \sin \alpha$$

$$\rightarrow F_L = 4,5 \text{ N}$$

$$F_H = F \cdot \cos \alpha$$

$$\rightarrow F_H = 6,0 \text{ N}$$

$$F_z = m \cdot g$$

$$\rightarrow 7,8 \text{ N}$$

4.  $F_N = F_z - F_{\perp}$

$\hookrightarrow 3,3 \text{ N}$

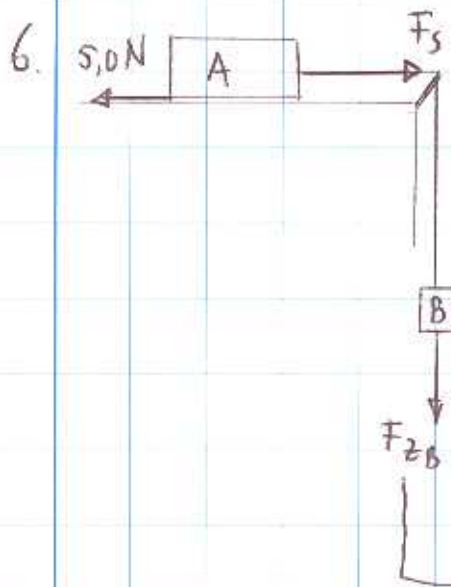
(zie opgave 3)

5.  $\sum F = m \cdot a$

$\downarrow$   $\uparrow 3,0$

$\sum F = F_{\parallel} - F_{\text{wv}}$

$\uparrow 6,0$   $\hookrightarrow F_{\text{wv}} = 3,6 \text{ N}$



$\sum F = m \cdot a$

$\downarrow (1,2 + 0,8)$   $\hookrightarrow 1,4 \text{ m} \cdot \text{s}^{-2}$

$\sum F = F_{zB} - F_{\text{wv}}$

$\uparrow 3,0$

7. We berekenen bijvoorbeeld A:

$F_s - 5,0 = m_A \cdot a$

$\uparrow 1,2$   $\rightarrow 6,7 \text{ N}$

8. +g

